

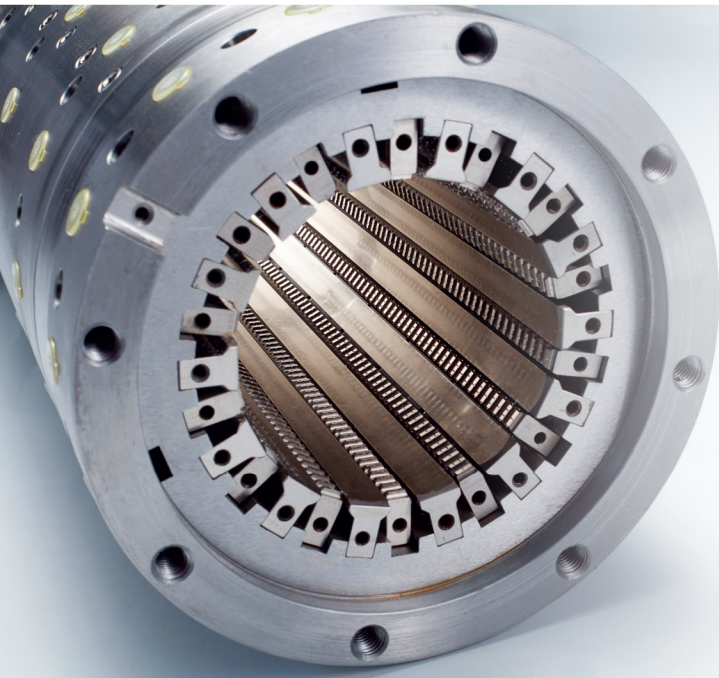
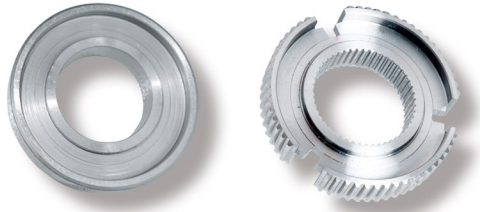


## 刀具移动筒式拉床

Tool moving cartridge broaching machine

LG5320TS-2500

- 适用于圆盘类零件的外齿外槽的拉削
- It is suitable for broaching external teeth and external grooves of disc parts.



项目 ITEM	单位 UNIT	LG5320TS-2500
额定拉削力 Rated broaching force	kN	200
最大行程 Max.stroke	mm	2,500
拉削速度 Broaching speed	m/min	1 ~ 10
返程速度 Return speed	m/min	28
适用工件范围 Scope of applicable workpieces	mm	外 (Out) : $\Phi 90-\Phi 220$ , 厚度 (Thickness) : 10-40
机床外形 Machine tool shape	m	5.4x8.5x8.5
机床精度标准 Machine tool precision standard		按德国标准 According to German standard