

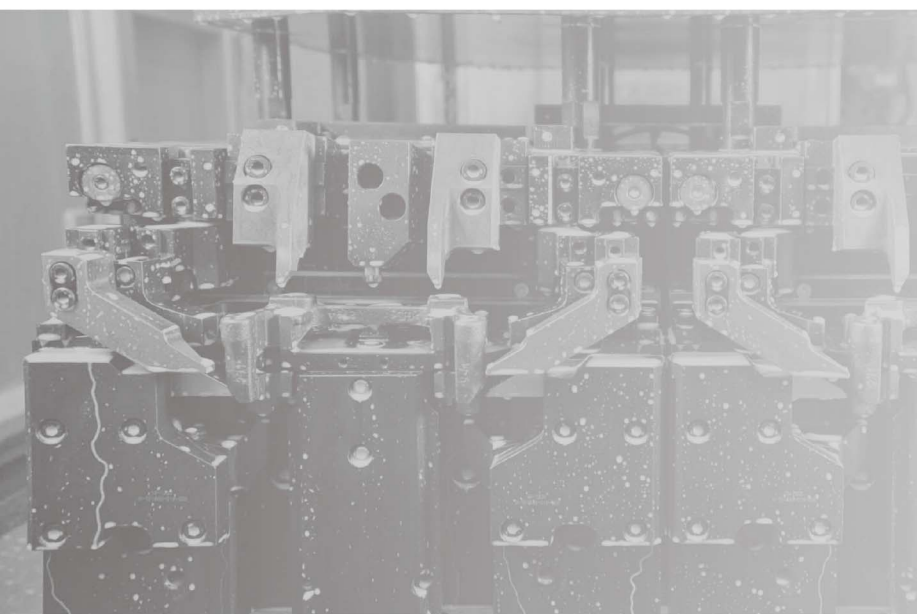
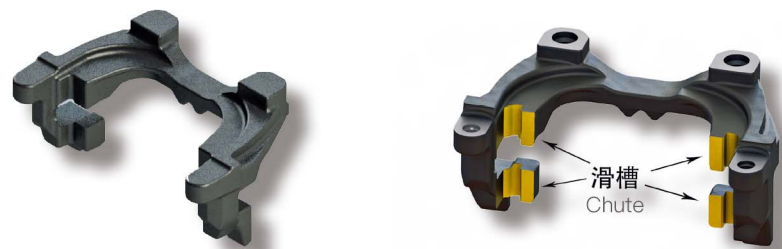
Automotive brake calipers broaching

CHR 畅尔 汽车刹车卡钳加工



满足各类型汽车刹车支架的滑槽加工

Meet the slide groove processing of various types of automotive brake brackets



LG72SS 系列
LG72SS Series

项目 ITEM	单位 UNIT	LG7220SS-2300
额定拉削力 Rated broaching force	kN	200
最大行程 Max.stroke	mm	2,300
主溜板规格 Specification of main slide plate	mm	615x2,150
拉削速度 Broaching speed	m/min	1 ~ 35
返程速度 Return speed	m/min	35
主电机功率 Main motor power	kW	37x2
机床总功率 Total power	kW	108
机床外形 Machine tool shape	m	8.8x5.0x7.6
地坑式安装(埋入深度) Pit installation(Depth of embedment)	m	2.10
机床净重 Net weight	t	28

LG71HA 系列
LG71HA Series

LG7120HA-2500
200
2,500
550x2,200
1 ~ 17
30
37
48
3.2x6.5x8.2
2.30
18

LG71TG 系列
LG71TG Series

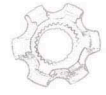
LG7120TG-2600
200
2,600
560x2050
1 ~ 18
30
55
75
3.6x6.0x8.0
2.20
18

LG72RS 系列
LG72RS Series

LG7120RS-2500
200
2,500
400x2000
1 ~ 17
30
37
55
4.5x4.85x7.0
2.20
22

Gear broaching

CHR 畅尔



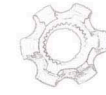
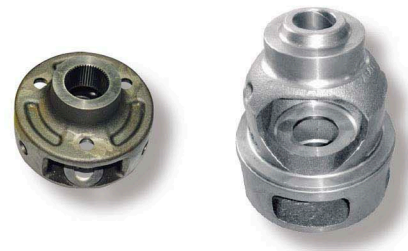
液压下拉式立式内拉床

Hydraulic pull-down type vertical internal broaching machine

LG51SH 系列

LG51SH Series

- 地坑安装或站架操作
· Pit installation or stand operation
- 适用工件范围广，加工精度高，生产节拍快
· Wide range of applicable workpieces, high machining accuracy and fast production tempo
- 拉刀全程护送，防止拉刀摆动，提高拉削精度
· Broach is escorted in the whole process to prevent broach from swinging and improve broaching accuracy

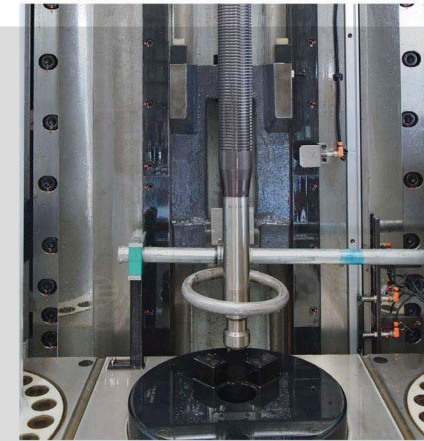


液压双缸下拉式立式内拉床

Hydraulic double-cylinder pull-down type vertical internal broaching machine

LG55KH 系列

- 液压双缸驱动，满足特大吨位工件加工
· Hydraulic double-cylinder drive, meeting the processing of extra-large tonnage workpieces
- 拉刀全程护送，防止拉刀摆动，提高拉削精度
· Broach is escorted in the whole process to prevent broach from swinging and improve broaching accuracy
- 双缸驱动，受力与拉削中心同面，拉削稳定
· Driven by double cylinders, the stress is in the same plane as the broaching center, and broaching is stable

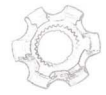


项目 ITEM	单位 UNIT	LG5120SH-1600	LG5130SH-1600	LG5140SH-2000
额定拉削力 Rated broaching force	kN	200	300	400
最大行程 Max.stroke	mm	1,600	1,600	2,000
提刀行程 Lifting stroke	mm	500	1,200	1,200
拉削速度 (分档调速) Broaching speed(Step speed regulation)	m/min	2.5 ~ 4.5 ~ 7	2.5 ~ 4.5 ~ 7	2 ~ 4 ~ 6
返程速度 Return speed	m/min	14	14	12
适用拉刀长度 Applicable broach length	mm	1,200 ~ 1,700	1,100 ~ 1,700	1,200 ~ 2,100
最大工件外径 Max. workpiece outer diameter	mm	Φ300	Φ300	Φ300
主电机功率 Main motor power	kW	22	37	45
机床总功率 Total power	kW	30	42	50
机床外形 Machine tool shape	m	3.5×5.0×5.8	4.0×5.8×6.7	4.0×6.0×8.0
机床净重 Net weight	t	15	18	20

项目 ITEM	单位 UNIT	LG5560KH-2000	LG55100KH-2000	LG55160KH-3000
额定拉削力 Rated broaching force	kN	600	1,000	1600
最大行程 Max.stroke	mm	2000	2,000	3000
提刀行程 Lifting stroke	mm	600	600	500
拉削速度 Broaching speed	m/min	1 ~ 5	1 ~ 5	0.5 ~ 3
返程速度 Return speed	m/min	10	10	2.5
适用拉刀长度 Applicable broach length	mm	1,200 ~ 2,000	1,200 ~ 2,000	1500 ~ 2,400
最大工件外径 Max. workpiece outer diameter	mm	Φ400	Φ450	Φ750
主电机功率 Main motor power	kW	55	40×2	90
机床总功率 Total power	kW	70	97	110
机床外形 Machine tool shape	m	4.2×6.2×8.5	4.2×6.2×8.5	4.2×8.3×9.6
机床净重 Net weight	t	30	36	45

Special broaching machine

CHR 畅尔 专用拉床



端面齿拉床

End face tooth broaching machine

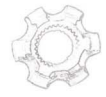


- 进退回转工作台
· Forward and backward rotary table
- 液压夹具自动转位
· Automatic indexing of hydraulic fixture



LG7120DC-2200

CHR 畅尔 自动化应用案例

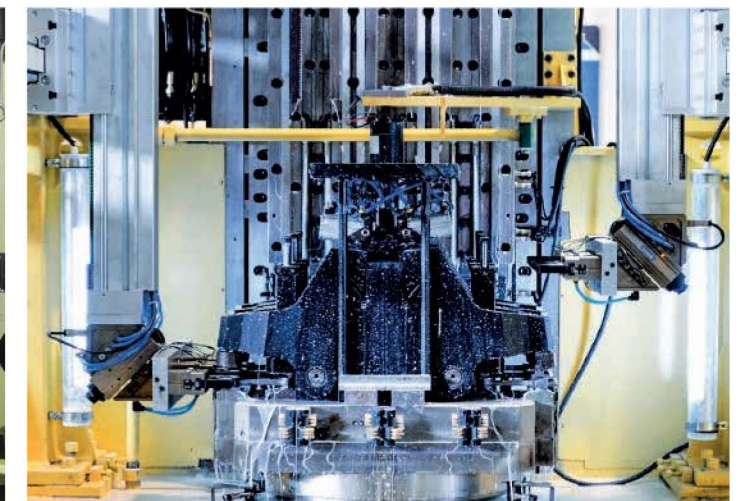
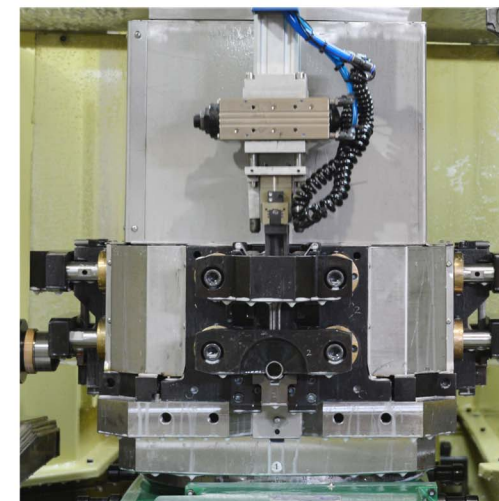
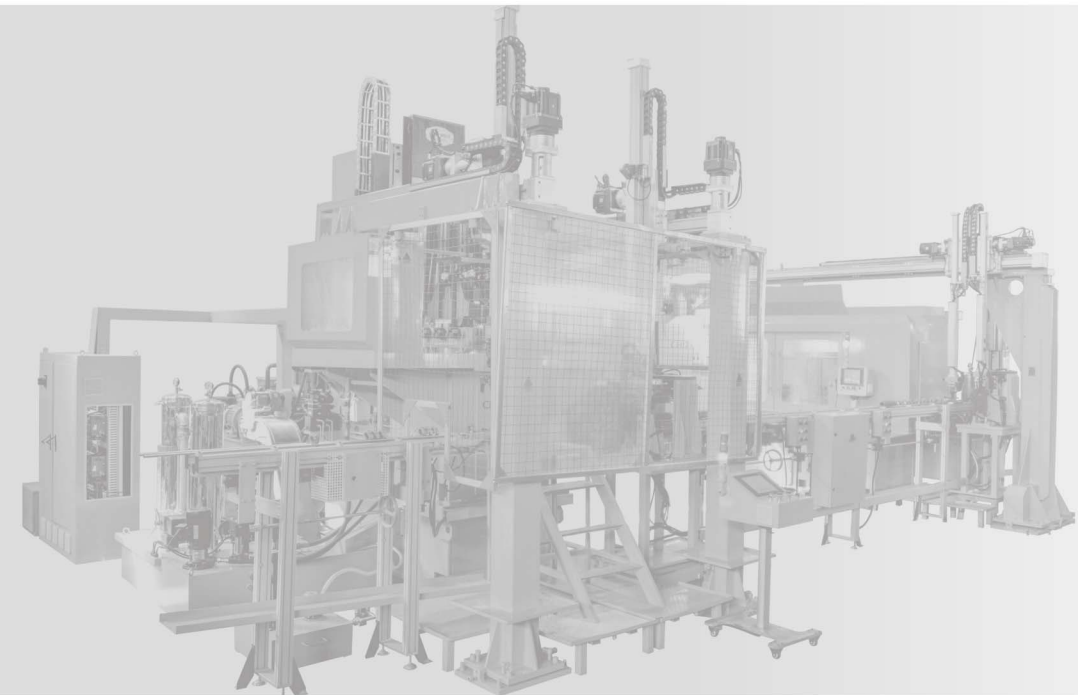
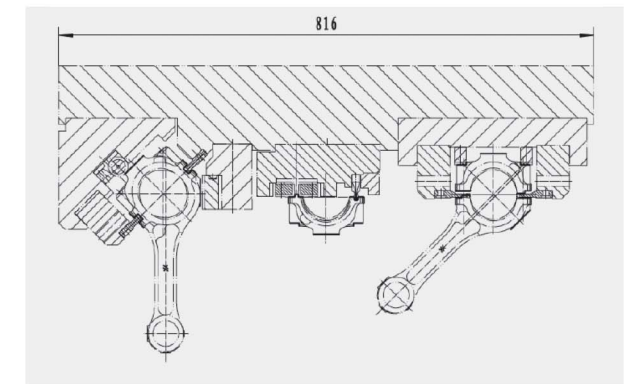


连杆自动化生产线

Connecting rod automated production line



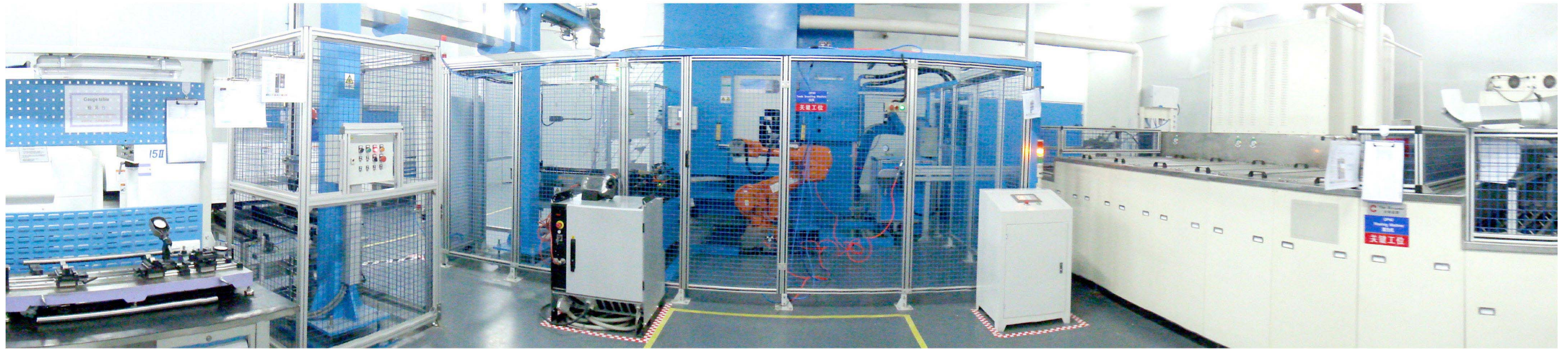
- 连杆加工整体解决方案
· Total solution for connecting rod processing
- 实现钻孔、倒角、镗孔、平面拉削等加工
· Realisation of drilling, chamfering, boring, plane broaching, etc
- 加工节拍为 10 秒 / 件
· Processing speed of 10 seconds per piece





转向齿条专用自动化拉床

Steering rack special automatic broaching machine



- 适用于齿条拉削加工
· Suitable for broaching rack
- 具备自动上料、工件精确定位、自动除油、自动下料、自动监测等功能
· It has the functions of automatic feeding, accurate workpiece positioning, automatic degreasing, automatic blanking and automatic monitoring
- 加工节拍为 24 秒 / 件
· The processing time is 24 seconds/piece

